



4671

**Features**

- 10µA Ultra High Resolution
- Large Conductor Diameter (30mm)
- AC Current in 5 Ranges (40mA, 400mA, 4A, 40A, 60A)
- Wide Frequency Response (40Hz~1KHz)
- AC A, AC V, Ω and Continuity
- Large 3¾ Digit LCD (4000 Count)
- 40 Segment Fast Bargraph Display (30 times/sec.)
- Data Hold and Max/Min Hold
- Relative Measurement
- 600 Vrms Overload Protection in Resistance Range
- Auto Power Off

**General Specifications**

<b>Jaw Opening</b>	Cable Dia 30mm. max. (approx.)
<b>Power</b>	Two 1.5V "AA" Battery
<b>Display</b>	3¾ LCD with 40 Segment Bargraph
<b>Range Selection</b>	Manual
<b>Overload Indication</b>	OL
<b>Power Consumption</b>	15mA (approx.)
<b>Low Battery Indication</b>	B
<b>Sampling Time</b>	3 time/sec. (display) 30 time/sec. (bargraph)
<b>Operating Environment</b>	-10 <sup>0</sup> to 50 <sup>0</sup> C, RH < 85%
<b>Storage Environment</b>	-20 <sup>0</sup> C to 60 <sup>0</sup> C, RH < 75%
<b>Altitude</b>	up to 2000M
<b>Dimensions</b>	210 x 72 x 36 mm
<b>Weight</b>	210gms Including Battery(approx.)
<b>Accessories</b>	Carrying Case x 1, Users Manual x 1, Battery (installed), Test Leads x 1 pair

**Specifications** (23<sup>0</sup>C ±5<sup>0</sup>C)

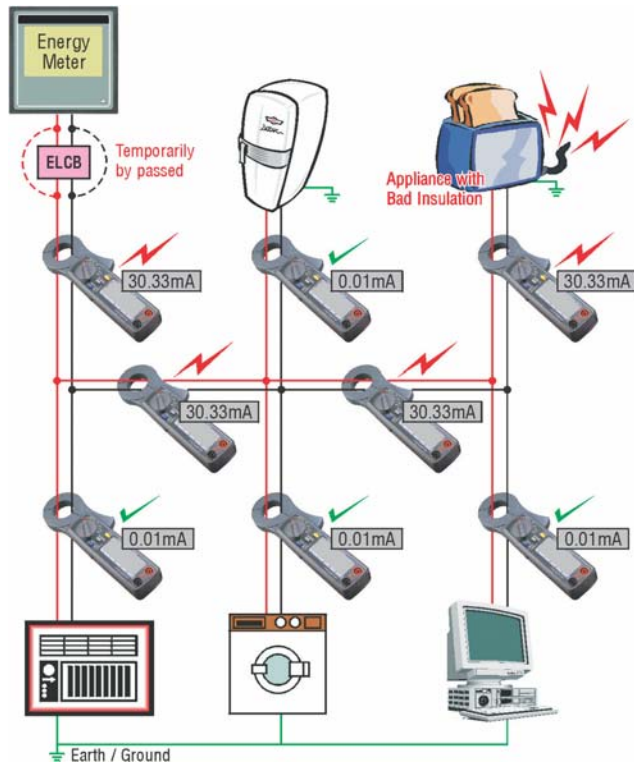
AC Current			
Range	Resolution	Accuracy	
		50/60 Hz	Wide (40Hz~1KHz)
40 mA	10 µA	±1.0%rdg ± 3dgts	±2.0%rdg ± 5dgts
400 mA	100 µA		
4 A	1 mA		
40 A	10 mA		
60 A (0~50A)	100 mA	±1.5%rdg ± 3dgts	±3.0%rdg ± 5dgts
60 A (50~60A)	100 mA	±3.0%rdg ± 5dgts	±3.5%rdg ± 5dgts

Though the Meter can Display upto 400A, the Calibration is valid upto 60A

Resistance (Ω) and Continuity (Open Voltage 0.4V)				
Range	Resolution	Accuracy	Beeping	OL Protection
40~400Ω	0.1Ω	±1.0%rdg ± 2dgts	<38.0Ω	AC 600V

AC Voltage (Input Impedance : 10 MΩ)				
Range	Resolution	Accuracy		Overload Protection
		50/60 Hz	40~1KHz	
400V	0.1V	±1.5%rdg ± 2dgts	±2.0%rdg ± 4dgts	AC 800V

**Fault Tracing of Live Installation**



**Application**

