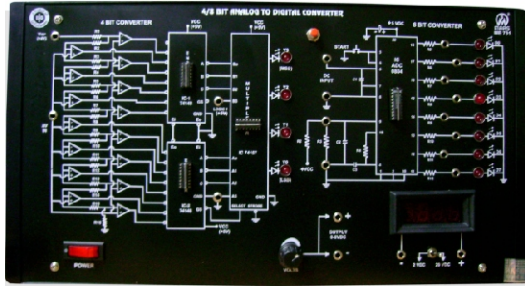


Digital Electronics Lab Training Modules

ME 731 - 4/8 Bit Analog to Digital Converter

Objective :

- 8 Bit Analog to Digital Converter has been designed to study and verify the outputs of 8 Bit Analog to Digital converter.



Technical Specifications :

Inbuilt Variable / Fixed DC Regulated Power Supplies

- Output Voltages : 0-5VDC
: 5VDC
: 4VDC

On Board Digital Meter

- Voltmeter : 20VDC
- Glass Epoxy PCB used as front panel of 400 mm x 220mm & mounted on light weight shock proof plastic cabinet.
- Symbol diagram printed on Aluminum Front Panel & all important test Points Are brought out on front panel
- Power requirement : 230 VAC 10%, 50Hz.
- Weight : 2.5Kg Approx.
- Dimensions (mm) : 430(L) x 225(B) x 90(H)

Standard Accessories :

- Power chord, Patch chords & Instruction manual.

ME 731E - 4 Bit Analog to Digital Converter

Objective :

- 4 Bit Analog to Digital Converter has been designed to study and verify the Outputs of 4 Bit Analog to Digital Converter.

Technical Specifications :

Inbuilt Variable / Fixed DC Regulated Power Supplies

- Output Voltages : 0-6VDC
: 5VDC

On Board Digital Meter

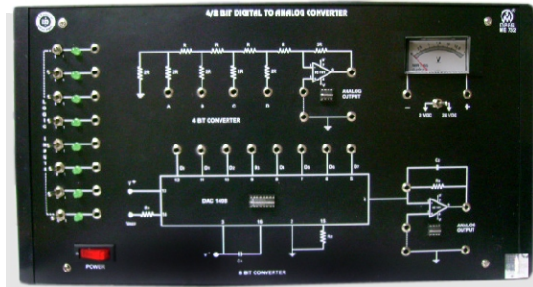
- Voltmeter : 2VDC & 20VDC

- Glass Epoxy PCB used as front panel of 270 mm x 170mm & mounted on light weight shock proof plastic cabinet.
 - Symbol diagram printed on Aluminum Front Panel & all important test Points are brought out on front panel
 - Power requirement : 230 VAC 10%, 50Hz.
 - Weight : 1.0Kg Approx.
 - Dimensions (mm) : 300(L) x 175(B) x 75(H)
- ##### Standard Accessories :
- Power chord, Patch chords & Instruction manual.

ME 732 - 8 Bit Analog to Digital Converter

Objective :

- 4/8 Bit Digital to Analog Converter has been designed to study and verify the Truth Tables of 4/8 Bit Digital to Analog converters.



Technical Specifications :

Inbuilt Fixed DC Regulated Power Supplies

- Output Voltages : 5VDC
: +15VDC

On Board Digital Meter

- Voltmeter : 2VDC - 20VDC
 - Logic Inputs 0 or 1 : 8 Nos (Through SPDT Switches)
 - Glass Epoxy PCB used as front panel of 400 mm x 225mm & mounted on light weight shock proof plastic cabinet.
 - Symbol diagram printed on Aluminum Front Panel & all important test Points Are brought out on front panel
 - Power requirement : 230 VAC 10%, 50Hz.
 - Weight : 2.5Kg Approx.
 - Dimensions (mm) : 430(L) x 230(B) x 90(H)
- ##### Standard Accessories :
- Power chord, Patch chords & Instruction manual.